

Pupil Support - Frequently Asked Questions

You may have lots of questions about starting or returning to school in September. Below are questions and answers we hope you find useful.

We can't wait to welcome everyone into school and get our fantastic learning started!

Why do we need to wash our hands regularly?

Throughout the day, we touch lots of different objects and surfaces. Some of these have germs on. When we sneeze, cough or blow our nose we spread germs too. We don't want to get germs into our body as they can make us poorly. We have to wash the germs away and the best way to do this is with soap and water.

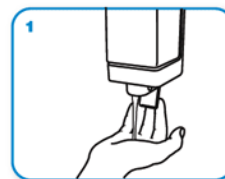


How do I wash my hands properly?

Washing your hands properly takes about as long as singing "Happy Birthday" twice, using these images (20 seconds). Try to practice at home before coming to school 😊



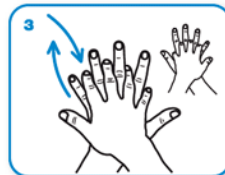
Wet hands with water



apply enough soap to cover all hand surfaces.



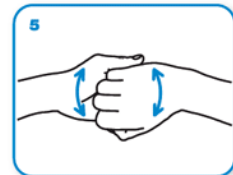
Rub hands palm to palm



right palm over left dorsum with interlaced fingers and vice versa



palm to palm with fingers interlaced



backs of fingers to opposing palms with fingers interlocked



rotational rubbing of left thumb clasped in right palm and vice versa



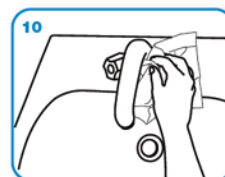
rotational rubbing, backwards and forwards with clasped fingers of right hand in left palm and vice versa.



Rinse hands with water



dry thoroughly with a single use towel



use towel to turn off faucet



...and your hands are safe.

Pupil Support - Frequently Asked Questions

What if there is no soap and water?

Antibacterial hand gel contains ingredients that kill germs on our hands. If there is no water and soap, this is the best thing to us to keep our hands clean.



What happens if I need to sneeze or cough?

If you sneeze or cough, try to do it into a tissue. Tissues will be kept on your desk so you can reach them easily. The tissue then needs to go into the lidded bin in your classroom and you must sanitise your hands.

If you don't have a tissue, cough or sneeze into your bent elbow. You must then sanitise your hands.

Catch it = catch the germs from your sneeze or cough in the tissue.

Bin it = put the tissue in the bin. This will mean the germs have gone in the bin too.

Kill it = wash your hands to make sure all of the germs are washed away.





Pupil Support - Frequently Asked Questions

Question	Answer
Will I see my friends in my class?	Yes, all 30 class members will be together with your new teacher.
Will I see my previous class teacher?	Yes, your previous teacher will have a new class but you may still see them around the school. They will not come into your new classroom to begin with.
What do I do if I feel unwell?	You must tell the nearest adult straight away if you feel unwell.
Will we play outside?	Yes, if it is not raining too hard! Your class will have its own area of the playground to play on. We are using both playgrounds and the MUGA pitch this year so there is lots of space for everyone to play. If it is dry, we will also use the field.
Where will I eat my lunch?	You will eat your lunch in the hall.
What do I need to bring to school?	You will need: <ul style="list-style-type: none">- book bag- PE kit- coat- packed lunch (for first two weeks)- healthy snack for play time- water bottle – water only please (kept at your desk) *EVERYTHING must be labelled with your name!*

Pupil Support - Frequently Asked Questions

<p>What do I not need to bring to school?</p>	<p>You will not need:</p> <ul style="list-style-type: none"> - a pencil case - anything to hand out e.g. birthday treats, invitations - toys or cards
<p>Will secondary staff come to the Primary to teach me lessons?</p>	<p>To start with, the secondary staff will not be coming down to the primary to teach lessons.</p>
<p>Will we visit the Secondary site?</p>	<p>To start with, we will not visit the secondary site and the secondary pupils will not visit us. We will see them over video link though and will still have lots of fun activities linked with them.</p>
<p>Will I get to see children in other classes?</p>	<p>You will see the other classes at break and lunch but you won't be able to play with them to begin with.</p>
<p>When can I go to the toilet?</p>	<p>You will be able to go to the toilet when you wash your hands:</p> <ul style="list-style-type: none"> - at the start of the day - at the start and end of break - at the start and end of lunch <p>You should try not to go to the toilet during lessons as it is important that you do not use learning time. If you are desperate, you can ask your teacher to go the toilet but this should not be more than once in a lesson.</p>

Pupil Support - Frequently Asked Questions

What will the classroom look like?

The classroom desks will all be facing the front, rather than in groups, and you will sit next to a partner that will be chosen by your teacher.

When you are in your seat you are not to get up without permission.

You will have your tray on your desk that will have everything you need for the day inside it. This includes items like a labelled pencil, pen, ruler, glue and your exercise books.

There will be yellow tape on the floor around where your teacher and TA are sat. You are not to cross the yellow tape as this is the adult's zone.

All classrooms will look similar to this:

